
APPENDIX C

MAPS

FOR THE

WHEATFIELD TOWNSHIP,

PERRY COUNTY, PA

COMPREHENSIVE PLAN

- 1 Population Density
- 2 Land Use
- 3 Community Facilities
- 4 Future Land Use

Intentionally Blank

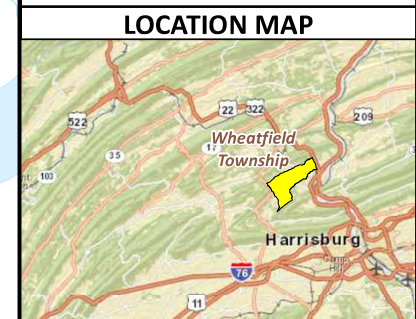
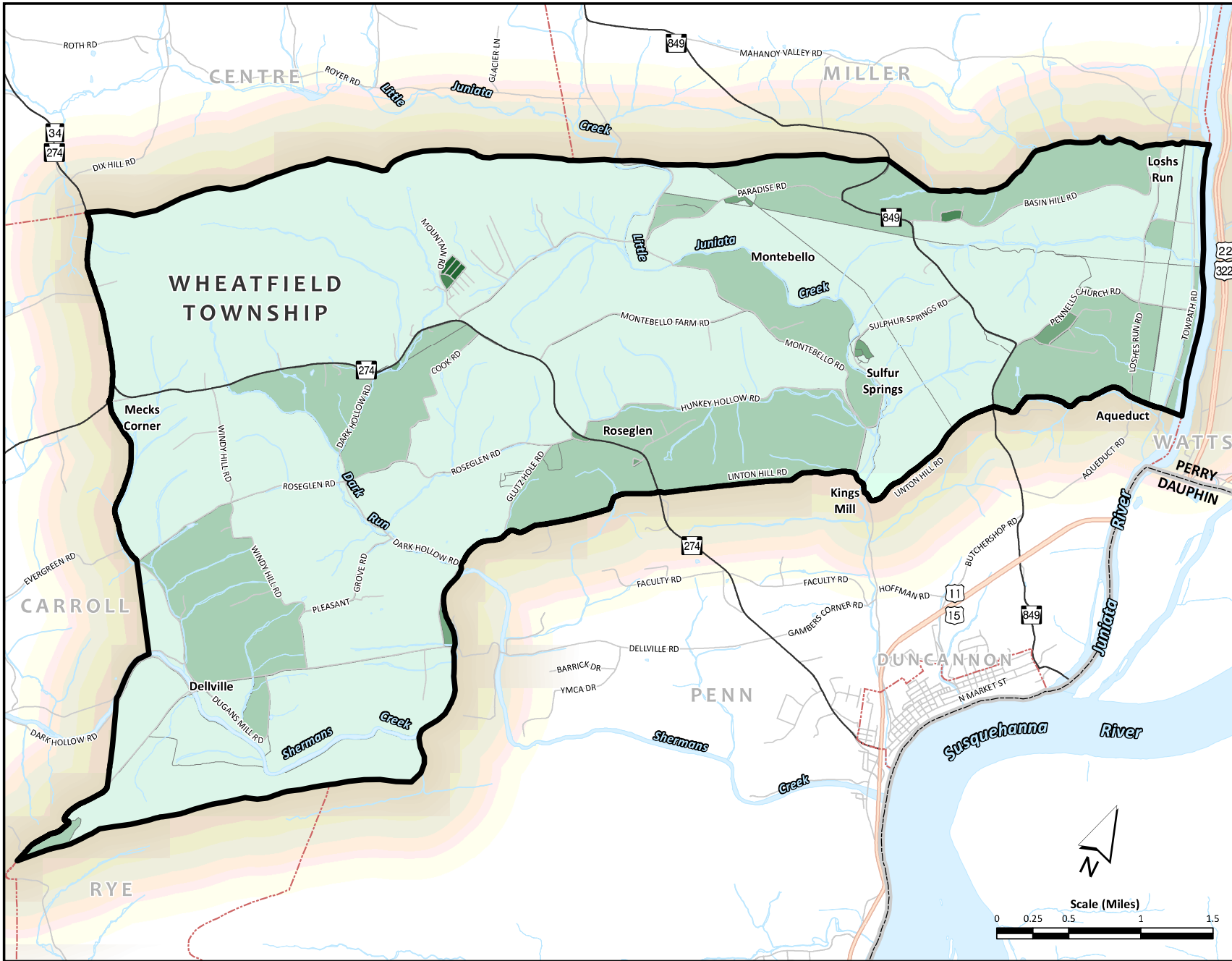
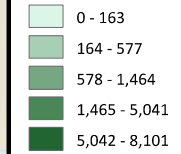
Wheatfield Township Comprehensive Plan

Wheatfield Township
Board of Supervisors

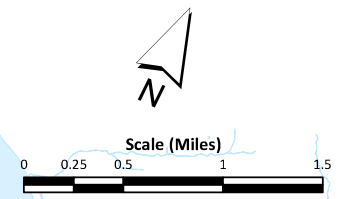
Map 1 Population Density

LEGEND

Persons/sq. mile by Census Block



Prepared Date: 6/8/2012
Source Data: Perry County GIS Department, Tri-County Regional Planning Commission, and 2010 U.S. Census.



Wheatfield Township Comprehensive Plan

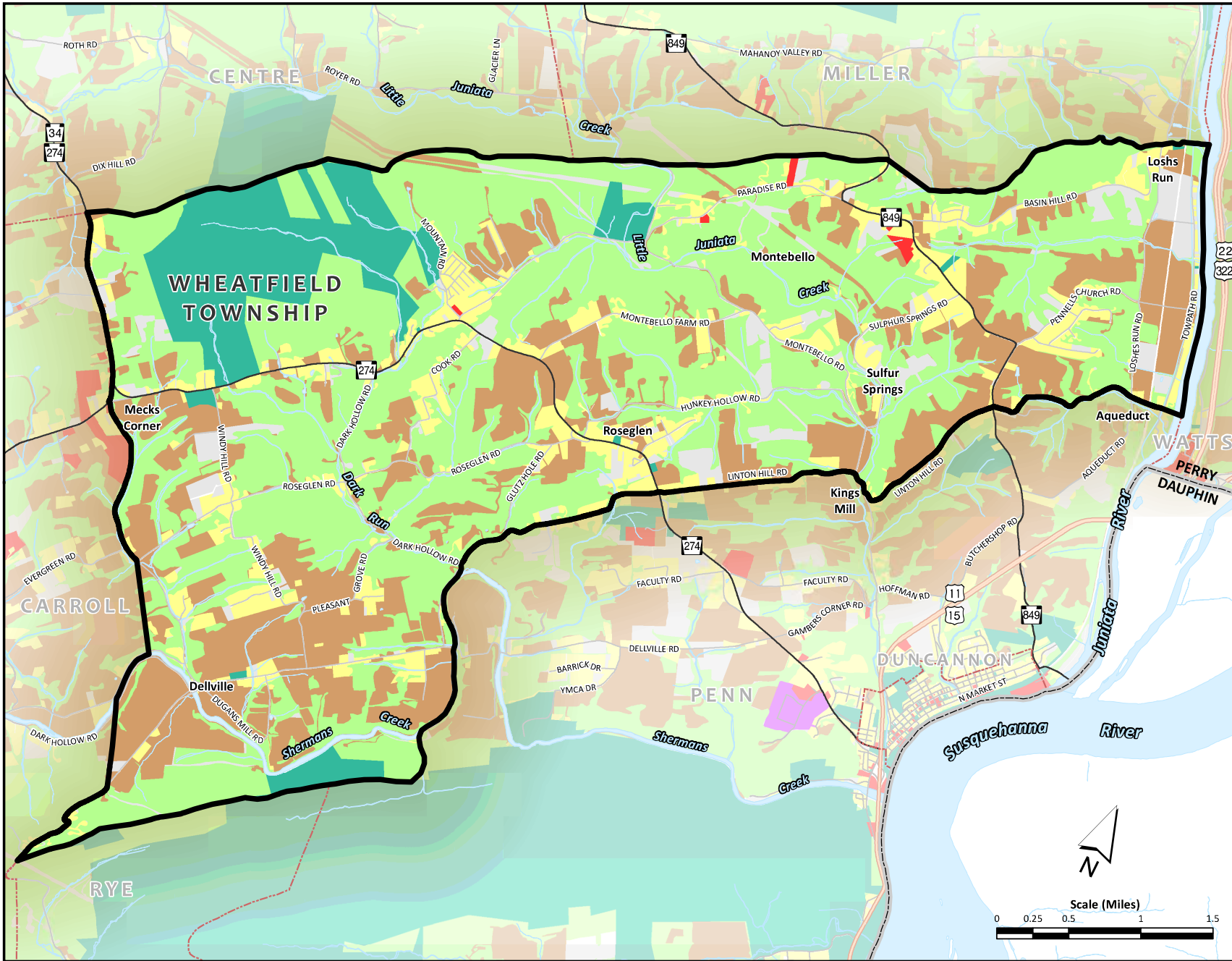
Wheatfield Township
Board of Supervisors

Map 2 Existing Land Use

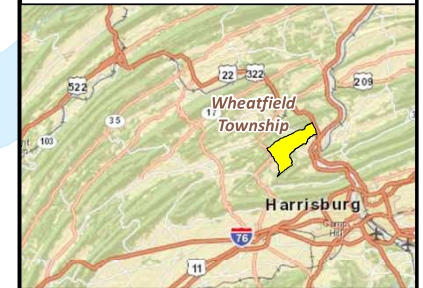
LEGEND

Existing Land Use

-  Agriculture
-  Commercial
-  Industrial
-  Public / Semi-Public
-  Residential
-  Vacant
-  Forested

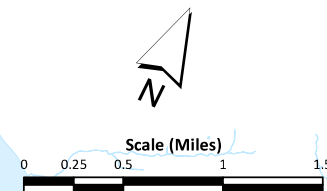


LOCATION MAP



Prepared Date: 6/8/2012

Source Data: Perry County GIS Department and
Tri-County Regional Planning Commission



Wheatfield Township Comprehensive Plan

Wheatfield Township
Board of Supervisors

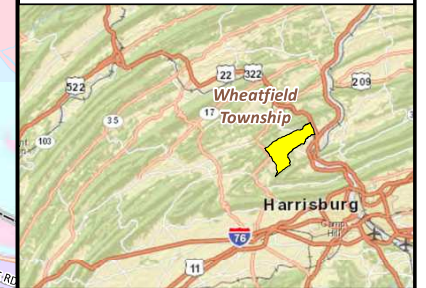
Map 3

Community Facilities

LEGEND

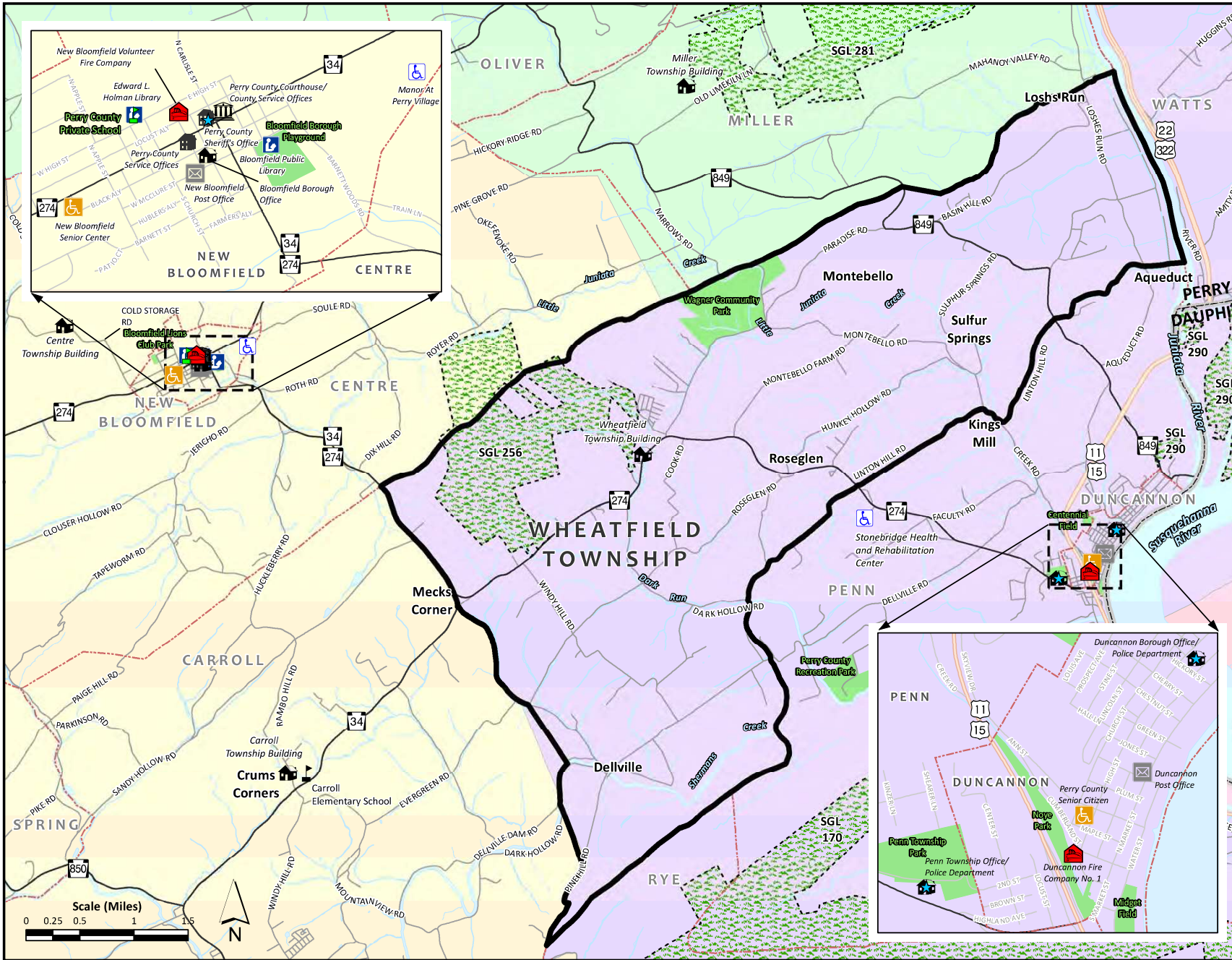
- | | | | |
|--|------------------------------|--|---------------------------------|
| | Private School | | Rivers and Major Streams |
| | Public School | | State Game Lands |
| | County Office | | County/Municipal Parks |
| | Courthouse | | Central Dauphin School District |
| | Fire Department | | Newport School District |
| | Library | | Susquenita School District |
| | Municipal Office | | West Perry School District |
| | Nursing Home | | |
| | Police Department | | |
| | Post Office | | |
| | Senior Center | | |
| | Wheatfield Township Boundary | | |
| | County Boundary | | |
| | Municipal Boundaries | | |
| | Streams | | |

LOCATION MAP



Prepared Date: 6/8/2012

Source Data: Perry County GIS Department, Tri-County Regional Planning Commission, PENNDOT




Wheatfield Township Comprehensive Plan

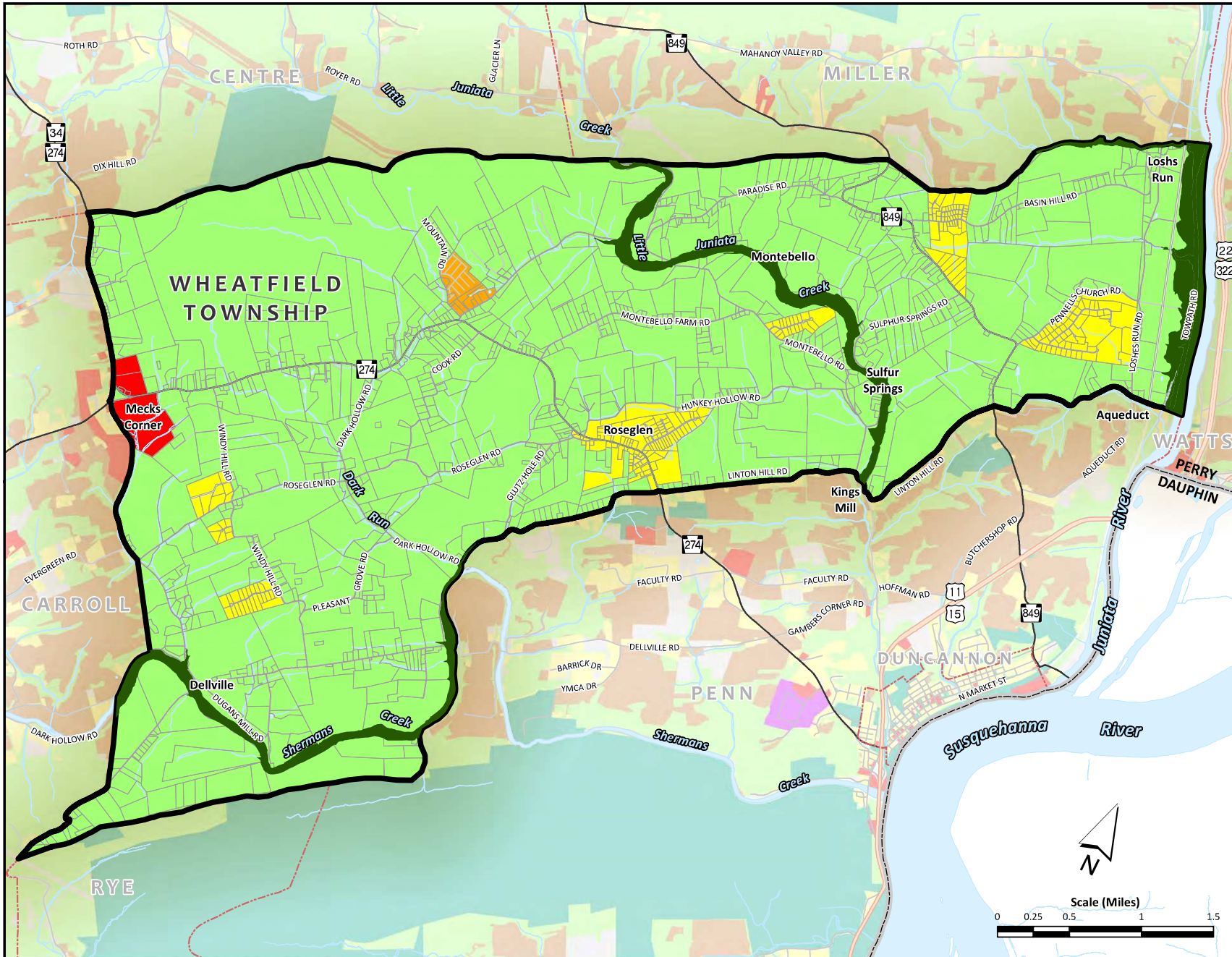
Wheatfield Township
Board of Supervisors

Map 4 Future Land Use

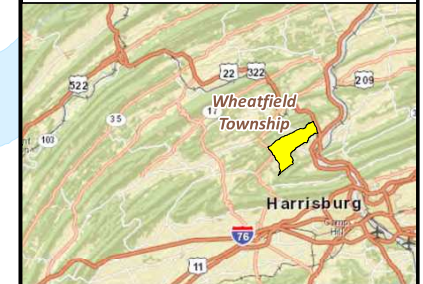
LEGEND

Future Land Use

-  Countryside
-  Commercial/Industrial
-  Residential
-  Residential 2
-  Floodplain



LOCATION MAP



Prepared Date: 6/8/2012

Source Data: Perry County GIS Department and
Tri-County Regional Planning Commission, FEMA
DFIRM Database of Perry County, Pennsylvania.

